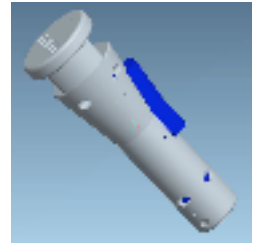




# The LineCrawler™ *How to Use for Derigging*

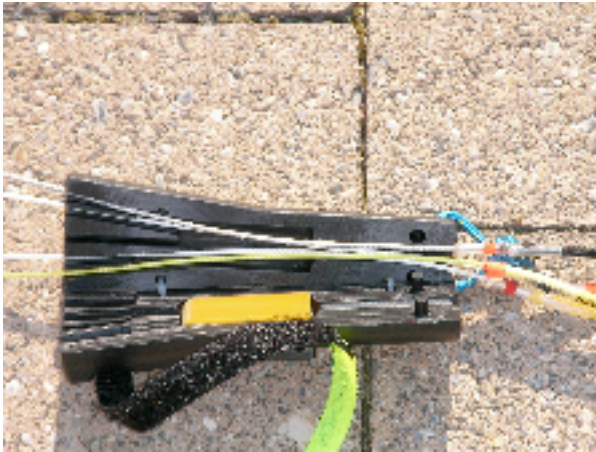


1)



Starting at the bar and organize the lines just in front, and now it's time to attach the LineCrawler.

2)



Open the LineCrawler and place each line in a channel.

3)



Now close the LineCrawler and fasten the velcro strap around the front of the LineCrawler to secure both halves together.

4)



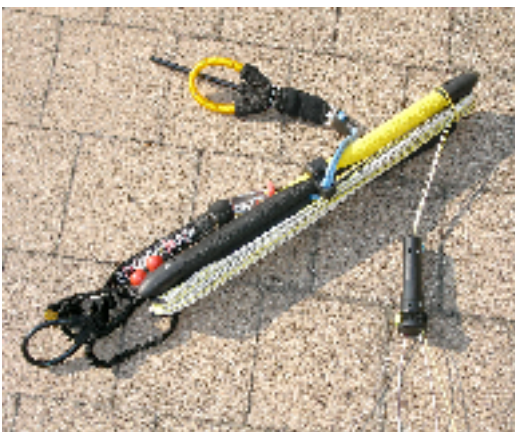
Gather up the the loose lines and start to wind the lines up.

5)



As you wind the lines you can hold the LineCrawler to help you keep the lines winding and assist the untangling of the lines.

6)



After winding all the lines around the bar fix them to stop them from coming off the bar and leave the LineCrawler attached ready for your next tangle-free setup.

Note:  
Kitesurfing is by nature a dangerous sport, but with practice and care the risks can be reduced. The LineCrawler can further reduce the risk of line tangles during setup if used correctly. Practise with the LineCrawler to ensure that you are familiar with the correct use of the tool. For futher information please visit our web-site.

[www.KiteLobster.com](http://www.KiteLobster.com)  
email: [info@kitelobster.com](mailto:info@kitelobster.com)