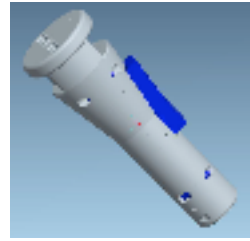




The LineCrawler™: *How to Use for Setup and Launch*



1)



The LineCrawler is attached to the lines from the last kiting session (see Derigging instructions to see how).

2)



With the kite prepared it's time to unwind a few meters of line with the LineCrawler still attached.

3)



With the LineCrawler in hand the order of the lines close to the kite is easy to maintain. Just pull the lines through and attach to the kite.

4)



With the lines now correctly attached to the kite, simply undo the retaining strap at the front of the LineCrawler and open the device to remove the lines.

5)



Unwind the rest of the lines from the bar. The lines are now untangled but there might be a twist or two, just rotate the bar to reveal straight lines correctly attached to your kite ready to launch safely.

Note:
Kitesurfing is by nature a dangerous sport, but with practice and care the risks can be reduced. The LineCrawler can further reduce the risk of line tangles during setup if used correctly. Practise with the LineCrawler to ensure that you are familiar with the correct use of the tool. For further information please visit our web-site.

www.KiteLobster.com
email: info@kitelobster.com